

Name \_\_\_\_\_

**General Knowledge Science**  
Review Set 1

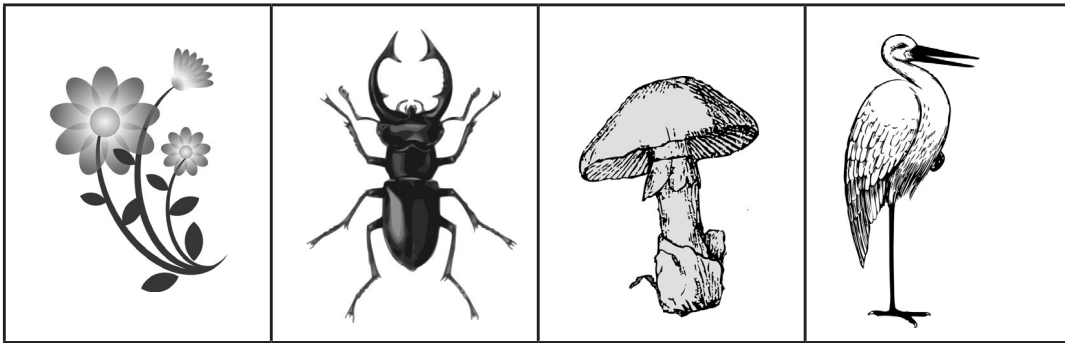
1 Which cell structure is found in plant cells, but not in animal cells?

- (1) cytoplasm                      (3) nucleus
- (2) cell membrane                (4) cell wall

2. Which sequence represents the levels of organization in a human body from simple to most complex?

- (1) cell → organ → tissue → organ system
- (2) organ system → cell → tissue → organ
- (3) cell → tissue → organ → organ system
- (4) tissue → organ → organ system → cell

3 The diagram below shows four organisms.



How many of the organisms represented in the diagram are multicellular?

- (1) one                      (3) three
- (2) two                     (4) four

4 The main function of a plant leaf is to

- (1) absorb water for the plant
- (2) perform photosynthesis
- (3) produce seeds
- (4) reproduce sexually

5 What is the function of DNA?

- (1) making nutrients through respiration
- (2) storing energy for the cell
- (3) carrying genetic information
- (4) transporting proteins

Use the Punnett square to answer the question below. In certain flowers, red (R) is dominant over pink (r).

	R	R
R	<i>RR</i>	<i>RR</i>
r	<i>Rr</i>	<i>Rr</i>

6 What percent of the offspring shown in the Punnett square will have pink flowers?

- (1) 0%
- (2) 25%
- (3) 75%
- (4) 100%

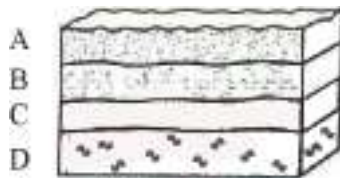
7 Which is not a chemical change?

- (1) the formation of rust
- (2) a vinegar-baking soda reaction
- (3) the condensation of water
- (4) the browning of an apple

8 One difference between sound and light waves is that:

- (1) sound waves travel much faster
- (2) sound waves can travel in space
- (3) sound waves carry electromagnetic energy
- (4) sound waves carry mechanical energy

The diagram below shows layers in the crust of the Earth. Layer A represents the surface of the Earth



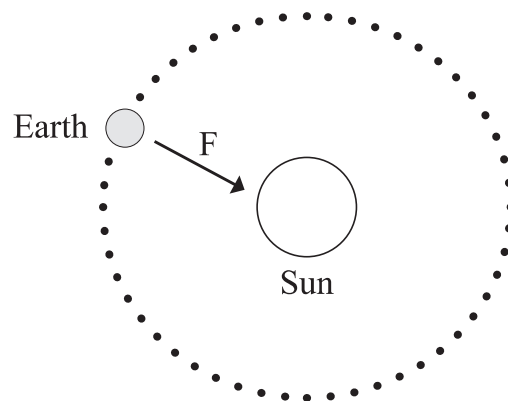
9 Which is true about layers in the diagram?

- 1. Layer D is older than Layer C
- 2. Layer C is younger than layer B
- 3. Layer A is older than layer B
- 4. Layer D is younger than layer C

10 Which layer of the Earth is the thinnest?

- (1) mantle
- (2) crust
- (3) inner core
- (4) outer core

Base your answers to questions 11 on the diagram below. The diagram represents the Earth and its orbit around Sun. The arrow labeled F represents the force that keeps the Earth in its orbit.



11 What is the name of the force that keeps the Earth in its orbit?

- (1) electromagnetic
- (2) centrifugal
- (3) gravity
- (4) friction

12 Which has more inertia?

- (1) a kilogram of foamboard
- (2) a kilogram of metamorphic rock
- (3) more information is needed
- (4) both are the same

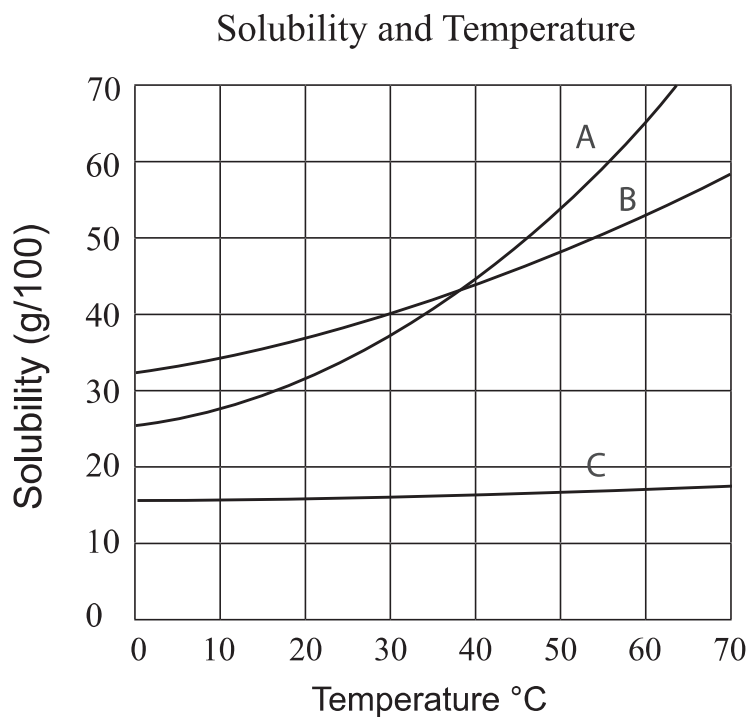
13 Which of the following will increase the acceleration of an object that is pushed by a force?

- (1) decreasing the mass of the object
- (2) decreasing the force of the object
- (3) increasing the mass of the object
- (4) none of the above

14 As a candle burns, the chemical energy stored in the wax is transformed into

- (1) heat and light
- (2) heat and magnetism
- (3) electricity and light
- (4) electricity and magnetism

Base your answers to question 15-17 on the table below. The graph shows the solubility curves for three different solutes (A-C). Each solute is dissolved in 100 ml of water at different temperatures.



15 How many grams of solute A will dissolve in 100 grams of water at 30°C?

\_\_\_\_\_ g

16 Describe the relationship between water temperature and the solubility of **Solute C** from 0°C to 30°C.

\_\_\_\_\_  
\_\_\_\_\_

17 What is one way to increase the solubility of solute B?

\_\_\_\_\_